



鼎圣集团有限公司

DINGSHENG GROUP CO.,LTD

诚信如鼎 品质为圣

CONTENTS

01 | Company Introduction 02 | Qualification Documents

03 | Product List

04 | R & D Ability

05 | Manufacture Ability

06 | Inspection Ability

07 | Busduct Introduction

08 | Key performance

PART 01

Company Profile





Geographic Location

Dingsheng Group Co., Ltd. is located in Yangzhong, China.

Dingsheng Group is a professional Contractor & Manufacturer for engineering electrical products, CQC classified management A-level enterprise, national high-tech enterprise, with 120,000 square meters factory area, registered capital of 42 million USD, fixed assets of 85 million USD and 400 employees.

Dingsheng Group has formed Five main industry sectors, including high & low voltage switchgear distribution system, intelligent busway & busduct for power transmission, new energy electric charging pile, seismic support structure and weak wiring system.

Development Path

Founded in 1978,
Formerly known as
Yangzhong
Petrochemical Parts
Factory

In 1990, company reached
joint venture cooperation
with American "Nike
International Trade Center",
then comes " Sino-USA
"Zhenjiang Kenik Electric
Instrument Equipment Co.,
Ltd."

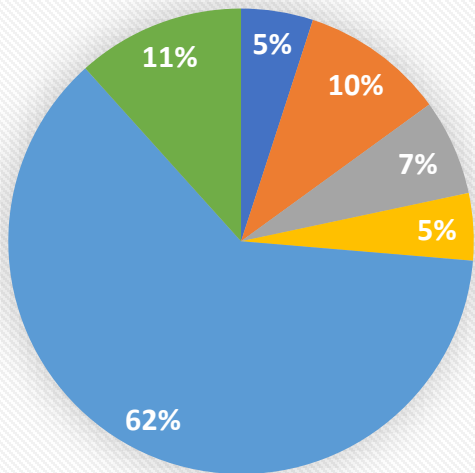
On 2001 July 16,
Zhenjiang Dingsheng
Electric Co., Ltd. was
formally established.

In 2014 July, we
established Dingsheng
Electric Co., Ltd."

In 2017, we
changed company
name to
"Dingsheng
Group Co., Ltd."



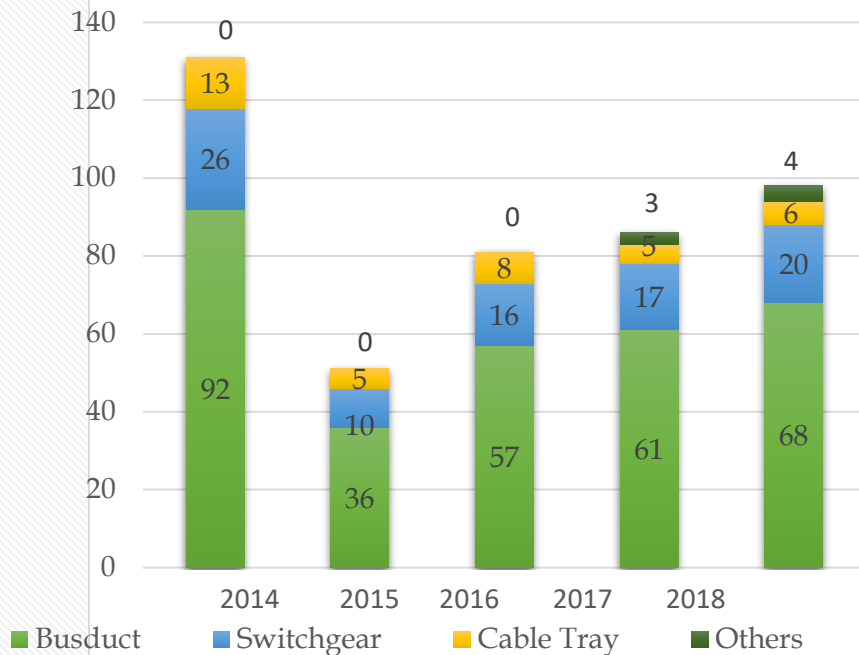
HR



R & D 15 -5% Tech 30 -10% QC 20 -7%
 Financial 14 -5% Workers 186 -62% Others 35 -12%

Unit: Million
USD

Sales performance in recent years



PART 02

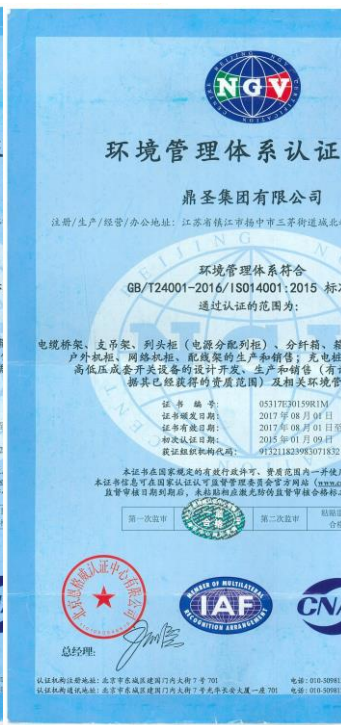
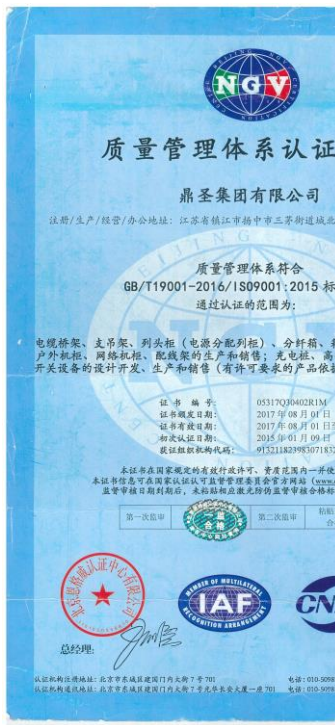
Qualification





Dingsheng Group is authorized manufacturer and dealer for branded switchgear products:

ABB MNS 2.0 Switchgear, SIEMENS Sivacon 8 PT switchgear and SCHNEIDER Blokset Switchgear



Quality

Environment

Health

Measurement

CERTIF	CERTIF	CERTIF	CERTIF	CERTIF	CERTIF	CERTIF	CERTIF	CERTIFICATE
<p>Issued to: Applicant: Ding Sheng Group Co., Ltd. No. 988, Yuting Road, North City Technology Park Yangshong City 212213 Jiangsu Province, China</p> <p>Product: Trade name(s): Type(s)/model(s): B D C</p> <p>The product and any accept documents therein referred to</p> <p>DEKRA hereby declares that: - a type test according to it - an inspection of the product - a certification agreement</p> <p>DEKRA hereby grants the right to use the KEMA-KEUR certification mark</p> <p>This certificate is issued on: mentioned standards</p> <p>Certificate number: 33-10118</p> <p>DEKRA Certification B.V. dts. G.J. Zwartboord Managing Director © Integral publication of this certificate</p> <p>ACCREDITED BY THE DUTCH ACCREDITATION COUNCIL</p> <p>DEKRA Certification B.V. Member T +31 88 96 63007 F +31 88 96 1</p>	<p>Issued to: Applicant: Ding Sheng Group Co., Ltd. No. 988, Yuting Road, North City Technology Park Yangshong City 212213 Jiangsu Province, China</p> <p>Product: Trade name(s): Type(s)/model(s): B D C</p> <p>The product and any accept documents therein referred to</p> <p>DEKRA hereby declares that: - a type test according to it - an inspection of the product - a certification agreement</p> <p>DEKRA hereby grants the right to use the KEMA-KEUR certification mark</p> <p>This certificate is issued on: mentioned standards</p> <p>Certificate number: 33-10236</p> <p>DEKRA Certification B.V. dts. G.J. Zwartboord Managing Director © Integral publication of this certificate</p> <p>ACCREDITED BY THE DUTCH ACCREDITATION COUNCIL</p> <p>DEKRA Certification B.V. Member T +31 88 96 63007 F +31 88 96 1</p>	<p>Issued to: Applicant: Ding Sheng Group Co., Ltd. No. 988, Yuting Road, North City Technology Park Yangshong City 212213 Jiangsu Province, China</p> <p>Product: Trade name(s): Type(s)/model(s): B D C</p> <p>The product and any accept documents therein referred to</p> <p>DEKRA hereby declares that: - a type test according to it - an inspection of the product - a certification agreement</p> <p>DEKRA hereby grants the right to use the KEMA-KEUR certification mark</p> <p>This certificate is issued on: mentioned standards</p> <p>Certificate number: 33-10236</p> <p>DEKRA Certification B.V. dts. G.J. Zwartboord Managing Director © Integral publication of this certificate</p> <p>ACCREDITED BY THE DUTCH ACCREDITATION COUNCIL</p> <p>DEKRA Certification B.V. Member T +31 88 96 63007 F +31 88 96 1</p>	<p>Issued to: Applicant: Ding Sheng Group Co., Ltd. No. 988, Yuting Road, North City Technology Park Yangshong City 212213 Jiangsu Province, China</p> <p>Product: Trade name(s): Type(s)/model(s): B D C</p> <p>The product and any accept documents therein referred to</p> <p>DEKRA hereby declares that: - a type test according to it - an inspection of the product - a certification agreement</p> <p>DEKRA hereby grants the right to use the KEMA-KEUR certification mark</p> <p>This certificate is issued on: mentioned standards</p> <p>Certificate number: 33-10236</p> <p>DEKRA Certification B.V. dts. G.J. Zwartboord Managing Director © Integral publication of this certificate</p> <p>ACCREDITED BY THE DUTCH ACCREDITATION COUNCIL</p> <p>DEKRA Certification B.V. Member T +31 88 96 63007 F +31 88 96 1</p>	<p>Issued to: Applicant: Ding Sheng Group Co., Ltd. No. 988, Yuting Road, North City Technology Park Yangshong City 212213 Jiangsu Province, China</p> <p>Product: Trade name(s): Type(s)/model(s): B D C</p> <p>The product and any accept documents therein referred to</p> <p>DEKRA hereby declares that: - a type test according to it - an inspection of the product - a certification agreement</p> <p>DEKRA hereby grants the right to use the KEMA-KEUR certification mark</p> <p>This certificate is issued on: mentioned standards</p> <p>Certificate number: 33-10118</p> <p>DEKRA Certification B.V. dts. G.J. Zwartboord Managing Director © Integral publication of this certificate</p> <p>ACCREDITED BY THE DUTCH ACCREDITATION COUNCIL</p> <p>DEKRA Certification B.V. Member T +31 88 96 63007 F +31 88 96 1</p>	<p>Issued to: Applicant: Ding Sheng Group Co., Ltd. No. 988, Yuting Road, North City Technology Park Yangshong City 212213 Jiangsu Province, China</p> <p>Product: Trade name(s): Type(s)/model(s): B D C</p> <p>The product and any accept documents therein referred to</p> <p>DEKRA hereby declares that: - a type test according to it - an inspection of the product - a certification agreement</p> <p>DEKRA hereby grants the right to use the KEMA-KEUR certification mark</p> <p>This certificate is issued on: mentioned standards</p> <p>Certificate number: 33-10118</p> <p>DEKRA Certification B.V. dts. G.J. Zwartboord Managing Director © Integral publication of this certificate</p> <p>ACCREDITED BY THE DUTCH ACCREDITATION COUNCIL</p> <p>DEKRA Certification B.V. Member T +31 88 96 63007 F +31 88 96 1</p>	<p>Issued to: Applicant: Ding Sheng Group Co., Ltd. No. 988, Yuting Road, North City Technology Park Yangshong City 212213 Jiangsu Province, China</p> <p>Product: Trade name(s): Type(s)/model(s): B D C</p> <p>The product and any accept documents therein referred to</p> <p>DEKRA hereby declares that: - a type test according to it - an inspection of the product - a certification agreement</p> <p>DEKRA hereby grants the right to use the KEMA-KEUR certification mark</p> <p>This certificate is issued on: mentioned standards</p> <p>Certificate number: 33-10118</p> <p>DEKRA Certification B.V. dts. G.J. Zwartboord Managing Director © Integral publication of this certificate</p> <p>ACCREDITED BY THE DUTCH ACCREDITATION COUNCIL</p> <p>DEKRA Certification B.V. Member T +31 88 96 63007 F +31 88 96 1</p>	<p>Issued to: Applicant: Ding Sheng Group Co., Ltd. No. 988, Yuting Road, North City Technology Park Yangshong City 212213 Jiangsu Province, China</p> <p>Product: Trade name(s): Type(s)/model(s): B D C</p> <p>The product and any accept documents therein referred to</p> <p>DEKRA hereby declares that: - a type test according to it - an inspection of the product - a certification agreement</p> <p>DEKRA hereby grants the right to use the KEMA-KEUR certification mark</p> <p>This certificate is issued on: mentioned standards</p> <p>Certificate number: 33-10118</p> <p>DEKRA Certification B.V. dts. G.J. Zwartboord Managing Director © Integral publication of this certificate</p> <p>ACCREDITED BY THE DUTCH ACCREDITATION COUNCIL</p> <p>DEKRA Certification B.V. Member T +31 88 96 63007 F +31 88 96 1</p>	<p>Licensee: Ding Sheng Group Co., Ltd. No. 988, Yuting Road, North City Technology Park Yangshong City 212213 Jiangsu Province, China</p> <p>Product: Trade name(s): Type(s)/model(s): B D C</p> <p>The product and any acceptable variation thereto is specified in the Annex to this certificate and the documents therein referred to</p> <p>DEKRA hereby declares that: - a type test according to the standard EN 61438-3:2012 - an inspection of the production location according to CENELEC Operational Document CIG 021 - a certification agreement with the number 220707</p> <p>DEKRA hereby grants the right to use the KEMA-KEUR certification mark</p> <p>The KEMA-KEUR certification mark may be applied to the product as specified in this certificate for the duration of the KEMA-KEUR certification agreement</p> <p>This certificate is issued on 30 November 2017 and expires upon withdrawal of one of the above mentioned standards</p> <p>Certificate number: 33-101948</p> <p>DEKRA Certification B.V. dts. G.J. Zwartboord Managing Director © Integral publication of this certificate is allowed</p> <p>ACCREDITED BY THE DUTCH ACCREDITATION COUNCIL</p> <p>DEKRA Certification B.V. Member T +31 88 96 63007 F +31 88 96 1</p>

Complying with IEC 61439 standard



Complying with GB7251 standard



(2016) 国认监试字 (086) 号



中国认可
国际互认
检测
TESTING
CNAS L4463

报告编号: 2017WT603
Report No: _____

检 验 报 告

TEST REPORT

产品名称: 母线槽
Name of products: _____

型号规格: CCX3 6300A
Type Specification: _____

委托单位: 鼎圣集团有限公司
Consign Unit: _____

检验类别: 委托试验
Kind of test: _____

国家电控制设备质量监督检验中心
China National Center for Quality Supervision and Test of
Electrical Control and Distribution Equipment (CCDT)

天津天传电控制设备检测有限公司
Tianjin Tianchuan Electrical Control Equipment Test CO., Ltd.



中国认可
检测
TESTING
CNAS L3986

151001060445

检 测 报 告

TEST REPORT

报告编号: JG2017027
REPORT No: _____

报 告 内 容
TEST CATEGORY CCX3母线槽抗震性能检测

检 测 类 别
CLASSIFICATION 委托检测

委 托 单 位
C L I E N T 鼎圣集团有限公司

南京工业大学



南京工大建设工程技术有限公司
Nanjing Gongda Construction Technology Co., Ltd.

Busduct High Altitude Test Report

Busduct Seismic Test Report

EU CE Certification

شهادة - Certificate - 증명서

Certificate of Compliance

No. 0D170807.DSGDC44
Technical Construction File no. DSG-17000807



Certificate's Holder: Ding Sheng Group Co., Ltd.
No.988, Yuxing Road North City Technology Park
Yang Zhong City Jiangsu Province

Certification ECM Mark: 

Product: Busways
Model(s): (see the following annex I)

Verification to: Standard: EN 61439-6:2012
related to CE Directive(s): 2014/35/EU (Low Voltage)

Remark: The product(s) has been verified on a voluntary basis. The product(s) satisfies the requirements of the Certification Mark of ECM. In reference to the above listed Standard(s), the above Compliance mark can be affixed on the product(s) accordingly to the ECM regulation about its release and its use. The regulation can be found at www.entecma.it. This Certificate of Compliance can be checked for validity at www.entecma.it.
This verification doesn't imply assessment of the production of the product(s).

Additional information, clarification about the CE Marking:
We attest that a TCF for the CE Marking process is in place. Whereas the Manufacturer is responsible to start the CE Marking Certification Procedure and to perform all the necessary activities, as required by the Directive before placing the CE Mark on the product(s).

CE

Date of issue 07 August 2017
Chief Manager
Marta Moring

Expiry date 06 August 2022
Deputy Manager
Amanda Payne





Ente Certificazione Macchine Srl
Via C.so. Bello, 243 - Loc. Castello di Serravalle - 40053 Valsamoggia (BO) - ITALY

شهادة - Certificate - 증명서

Annex I

No. 0D170807.DSGDC44
Technical Construction File no. DSG-17000807





Model(s): CCX3
(6300A, 5000A, 4000A, 3200A, 2500A, 2000A, 1600A, 1250A, 1000A, 800A, 630A, 500A, 400A, 315A, 250A, 200A, 160A, 100A)
DCC-I
(6300A, 5000A, 4000A, 3200A, 2500A, 2000A, 1600A, 1250A, 1000A, 800A, 630A, 500A, 400A, 315A, 250A, 200A, 160A, 100A)
FSMC
(6300A, 5000A, 4000A, 3200A, 2500A, 2000A, 1600A, 1250A, 1000A, 800A, 630A, 500A, 400A, 315A, 250A, 200A, 160A, 100A)
CFW
(6300A, 5000A, 4000A, 3200A, 2500A, 2000A, 1600A, 1250A, 1000A, 800A, 630A, 500A, 400A, 315A, 250A, 200A, 160A, 100A)
CCX3-L
(6300A, 5000A, 4000A, 3200A, 2500A, 2000A, 1600A, 1250A, 1000A, 800A, 630A, 500A, 400A, 315A, 250A, 200A, 160A, 100A)
CCX3-TL
(6300A, 5000A, 4000A, 3200A, 2500A, 2000A, 1600A, 1250A, 1000A, 800A, 630A, 500A, 400A, 315A, 250A, 200A, 160A, 100A)
NHCCX
(6300A, 5000A, 4000A, 3200A, 2500A, 2000A, 1600A, 1250A, 1000A, 800A, 630A, 500A, 400A, 315A, 250A, 200A, 160A, 100A)
DCK
(6300A, 5000A, 4000A, 3200A, 2500A, 2000A, 1600A, 1250A, 1000A, 800A, 630A, 500A, 400A, 315A, 250A, 200A, 160A, 100A)

Ente Certificazione Macchine Srl
Via C.so. Bello, 243 - Loc. Castello di Serravalle - 40053 Valsamoggia (BO) - ITALY

13 Invention patent

证书号第 3019238 号



发明专利证书

发明名称：一种高安全性能母线槽插接箱

发明人：李立军;张开银

专利号：ZL 2017 1 0207217.3

专利申请日：2017 年 03 月 31 日

专利权人：鼎圣集团有限公司

地址：212200 江苏省镇江江扬中市三茅街道城北科技产业园裕兴路 988 号


授权公告日：2018 年 08 月 03 日 授权公告号：CN 106848965 B

本发明经过本局依照中华人民共和国专利法进行审查，决定授予专利权，颁发本证书并在专利登记簿上予以登记。专利权自授权公告之日起生效。

本专利的专利权期限为二十年，自申请日起算。专利权人应当依照专利法及其实施细则规定缴纳年费。本专利的年费应当在每年 03 月 31 日前缴纳。未按照规定缴纳年费的，专利权自应当缴纳年费期满之日起终止。

专利证书记载专利权登记时的法律状况。专利权的转移、质押、无效、终止、恢复和专利权人的姓名或名称、国籍、地址变更等事项记载在专利登记簿上。

局长 申长雨



第 1 页 (共 1 页)

25 Utility Model patent

证书号第 3019239 号



发明专利证书

发明名称：一种母线槽

发明人：李立军;张开银

专利号：ZL 2017 1 0207619.3

专利申请日：2017 年 03 月 31 日

专利权人：鼎圣集团有限公司

地址：212200 江苏省镇江江扬中市三茅街道城北科技产业园裕兴路 988 号

授权公告日：2018 年 08 月 03 日 授权公告号：CN 106848966 B

本发明经过本局依照中华人民共和国专利法进行审查，决定授予专利权，颁发本证书并在专利登记簿上予以登记。专利权自授权公告之日起生效。

本专利的专利权期限为二十年，自申请日起算。专利权人应当依照专利法及其实施细则规定缴纳年费。本专利的年费应当在每年 03 月 31 日前缴纳。未按照规定缴纳年费的，专利权自应当缴纳年费期满之日起终止。

专利证书记载专利权登记时的法律状况。专利权的转移、质押、无效、终止、恢复和专利权人的姓名或名称、国籍、地址变更等事项记载在专利登记簿上。



局长 申长雨



第 1 页 (共 1 页)

6 Design patent

证书号第 3086023 号



发明专利证书

发明名称：一种智能母线插接箱

发明人：张开银;李立军

专利号：ZL 2017 1 0423531.5

专利申请日：2017 年 06 月 07 日

专利权人：鼎圣集团有限公司

地址：212200 江苏省镇江江扬中市三茅街道城北科技产业园裕兴路 988 号


授权公告日：2018 年 09 月 25 日 授权公告号：CN 107017597 B

本发明经过本局依照中华人民共和国专利法进行审查，决定授予专利权，颁发本证书并在专利登记簿上予以登记。专利权自授权公告之日起生效。

本专利的专利权期限为二十年，自申请日起算。专利权人应当依照专利法及其实施细则规定缴纳年费。本专利的年费应当在每年 06 月 07 日前缴纳。未按照规定缴纳年费的，专利权自应当缴纳年费期满之日起终止。

专利证书记载专利权登记时的法律状况。专利权的转移、质押、无效、终止、恢复和专利权人的姓名或名称、国籍、地址变更等事项记载在专利登记簿上。

局长 申长雨



第 1 页 (共 1 页)

证书号第4	证书号第517	证书号第668	证书号第668	证书号第668	证书号第668	证书号第668	证书号第668	证书号第668	证书号第5177697号
外观设计专利	实用新型名称	实用新型名称	实用新型名称	实用新型名称	实用新型名称	实用新型名称	实用新型名称	实用新型名称	实用新型名称：一种具有快速散热功能的低压母线槽
设计	发明人	发明人	发明人	发明人	发明人	发明人	发明人	发明人	发明人：张开银
专利	专利号	专利号	专利号	专利号	专利号	专利号	专利号	专利号	专利号：ZL 2015 2 0895671.9
专利申请	专利申请日	专利申请日	专利申请日	专利申请日	专利申请日	专利申请日	专利申请日	专利申请日	专利申请日：2015年11月10日
专利权	专利权人	专利权人	专利权人	专利权人	专利权人	专利权人	专利权人	专利权人	专利权人：鼎圣电气有限公司
授权公告	授权公告日	授权公告日	授权公告日	授权公告日	授权公告日	授权公告日	授权公告日	授权公告日	授权公告日：2016年05月04日
本外观设计专利自公告之日起三年内有效。权利人应当自公告之日起三年内，按照规定缴纳年费。未按规定缴纳年费的，专利权自应当缴纳年费期满之日起终止。	本实用新型涉及一种具有快速散热功能的低压母线槽，属于低压母线槽技术领域。本实用新型包括：母线槽本体、散热装置、温度传感器、控制单元。所述散热装置包括：散热翅片、散热风扇、散热管。所述温度传感器安装在所述母线槽本体上，用于检测所述母线槽本体的温度。所述控制单元与所述温度传感器、散热装置电连接，用于根据所述温度传感器的检测信号，控制所述散热装置的运行。本实用新型结构简单，散热效果好，能够有效降低所述母线槽本体的温度，提高其使用寿命。	本实用新型涉及一种具有快速散热功能的低压母线槽，属于低压母线槽技术领域。本实用新型包括：母线槽本体、散热装置、温度传感器、控制单元。所述散热装置包括：散热翅片、散热风扇、散热管。所述温度传感器安装在所述母线槽本体上，用于检测所述母线槽本体的温度。所述控制单元与所述温度传感器、散热装置电连接，用于根据所述温度传感器的检测信号，控制所述散热装置的运行。本实用新型结构简单，散热效果好，能够有效降低所述母线槽本体的温度，提高其使用寿命。	本实用新型涉及一种具有快速散热功能的低压母线槽，属于低压母线槽技术领域。本实用新型包括：母线槽本体、散热装置、温度传感器、控制单元。所述散热装置包括：散热翅片、散热风扇、散热管。所述温度传感器安装在所述母线槽本体上，用于检测所述母线槽本体的温度。所述控制单元与所述温度传感器、散热装置电连接，用于根据所述温度传感器的检测信号，控制所述散热装置的运行。本实用新型结构简单，散热效果好，能够有效降低所述母线槽本体的温度，提高其使用寿命。	本实用新型涉及一种具有快速散热功能的低压母线槽，属于低压母线槽技术领域。本实用新型包括：母线槽本体、散热装置、温度传感器、控制单元。所述散热装置包括：散热翅片、散热风扇、散热管。所述温度传感器安装在所述母线槽本体上，用于检测所述母线槽本体的温度。所述控制单元与所述温度传感器、散热装置电连接，用于根据所述温度传感器的检测信号，控制所述散热装置的运行。本实用新型结构简单，散热效果好，能够有效降低所述母线槽本体的温度，提高其使用寿命。	本实用新型涉及一种具有快速散热功能的低压母线槽，属于低压母线槽技术领域。本实用新型包括：母线槽本体、散热装置、温度传感器、控制单元。所述散热装置包括：散热翅片、散热风扇、散热管。所述温度传感器安装在所述母线槽本体上，用于检测所述母线槽本体的温度。所述控制单元与所述温度传感器、散热装置电连接，用于根据所述温度传感器的检测信号，控制所述散热装置的运行。本实用新型结构简单，散热效果好，能够有效降低所述母线槽本体的温度，提高其使用寿命。	本实用新型涉及一种具有快速散热功能的低压母线槽，属于低压母线槽技术领域。本实用新型包括：母线槽本体、散热装置、温度传感器、控制单元。所述散热装置包括：散热翅片、散热风扇、散热管。所述温度传感器安装在所述母线槽本体上，用于检测所述母线槽本体的温度。所述控制单元与所述温度传感器、散热装置电连接，用于根据所述温度传感器的检测信号，控制所述散热装置的运行。本实用新型结构简单，散热效果好，能够有效降低所述母线槽本体的温度，提高其使用寿命。	本实用新型涉及一种具有快速散热功能的低压母线槽，属于低压母线槽技术领域。本实用新型包括：母线槽本体、散热装置、温度传感器、控制单元。所述散热装置包括：散热翅片、散热风扇、散热管。所述温度传感器安装在所述母线槽本体上，用于检测所述母线槽本体的温度。所述控制单元与所述温度传感器、散热装置电连接，用于根据所述温度传感器的检测信号，控制所述散热装置的运行。本实用新型结构简单，散热效果好，能够有效降低所述母线槽本体的温度，提高其使用寿命。	本实用新型涉及一种具有快速散热功能的低压母线槽，属于低压母线槽技术领域。本实用新型包括：母线槽本体、散热装置、温度传感器、控制单元。所述散热装置包括：散热翅片、散热风扇、散热管。所述温度传感器安装在所述母线槽本体上，用于检测所述母线槽本体的温度。所述控制单元与所述温度传感器、散热装置电连接，用于根据所述温度传感器的检测信号，控制所述散热装置的运行。本实用新型结构简单，散热效果好，能够有效降低所述母线槽本体的温度，提高其使用寿命。	本实用新型经过本局依照中华人民共和国专利法进行初步审查，决定授予专利权，颁发本证书并在专利登记簿上予以登记。专利权的保护期限为十年，自申请日起算。专利权人应当依照专利法及其实施细则规定缴纳年费。本专利的年费应当在每年11月10日前缴纳。未按规定缴纳年费的，专利权自应当缴纳年费期满之日起终止。专利证书记载专利权登记时的法律状况。专利权的转移、质押、无效、终止、恢复和专利权人的姓名或者名称、国籍、地址变更等事项记载在专利登记簿上。
局长 申长雨	局长 申长雨	局长 申长雨	局长 申长雨	局长 申长雨	局长 申长雨	局长 申长雨	局长 申长雨	局长 申长雨	局长 申长雨



鼎圣集团
DINGSHENG GROUP

PART 03 Products

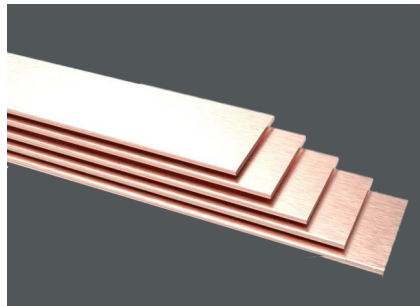




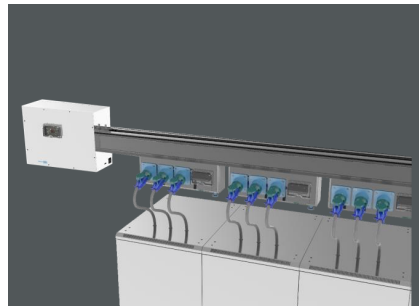
▶ CCX3 Compact
Sandwich Busduct



▶ DCC Compact
Sandwich Busduct



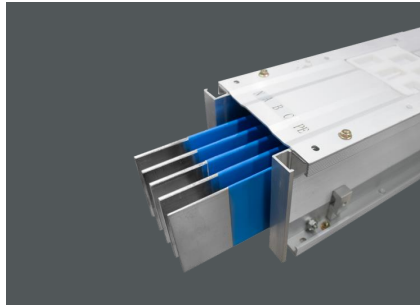
▶ Copper Bus Bar



▶ DCIB Intelligent
Data Center Busduct



▶ FSMC Insulated
Cast Resin Busduct



▶ CFW Air Insulated Busduct



▶ NHCCX3 fireproof Busduct



▶ GFM Non-segregated
Phase Busduct

Authorize d cabinet

- ABB MNS2.0 low voltage switchgear
- Schneider Blokset low voltage switchgear
- Siemens SIVACON 8PT low voltage switchgear
- GE MLS-V low voltage switchgear
- ABB MD190 low voltage switchgear

Low Voltage Cabinet

- MNS type low voltage switchgear
- GCS type low voltage switchgear
- GCK type low voltage switchgear
- GGD type low voltage switchgear
- GDF type low voltage fixed separation switchgear
- DSRJ (DSRZ, DSRF, DSRG) type low voltage reactive power compensation device

High Voltage Cabinet

- KYN28-12 high voltage switchgear

Others

- JP type integrated power distribution cabinet
- DBX type energy metering box
- JXF, DXR, PZ30, GXL type distribution box



Schneider Blokset

The Blokset Low Voltage Cabinet is a low voltage complete set of equipment that Schneider Electric has partnered with the Dingsheng Group. The technology is derived from Schneider and has an excellent modular structure and a standardized design concept. Digested and absorbed by Dingsheng Group, refined production. It can meet the needs of customers' various power distribution solutions.

Technique Parameter

Current: 400A ~ 6300A

Protection: Up to IP42



ABB MNS 2.0

MNS2.0 is ABB's well-known low-voltage cabinet type in China. Has entered the Chinese market for more than 40 years, and constantly improve and improve to maintain the leading edge of technology.

Dingsheng Group is one of the manufacturers authorized by ABB to produce MNS2.0 low-voltage switchgear in China. MNS2.0 low-voltage cabinet system includes electrical structure with modular design to meet various component requirements and is suitable for different working environments.

Technique Parameter

Current: 400A ~ 6300A

Protection: Up to IP42



Siemens 8PT

Dingsheng Group 8PT low-voltage switchgear is an advanced cabinet type designed and authorized by Siemens AG of Germany.

It has a variety of installation technologies: circuit breaker fixed type, drawer type and plug-in type. The power distribution unit is safe, reliable and flexible. It is widely used in various industries.

Technique Parameter

Current: 400A ~ 6300A

Protection: Up to IP42



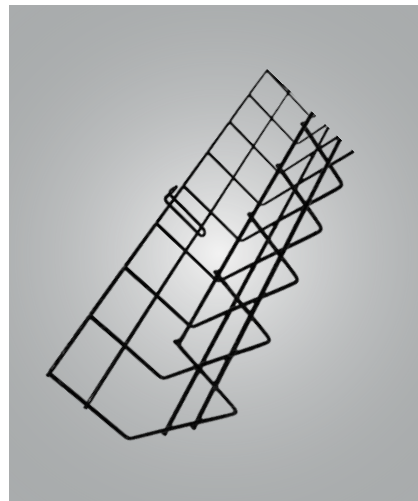
Cable Trunking



Ladder Cable Tray



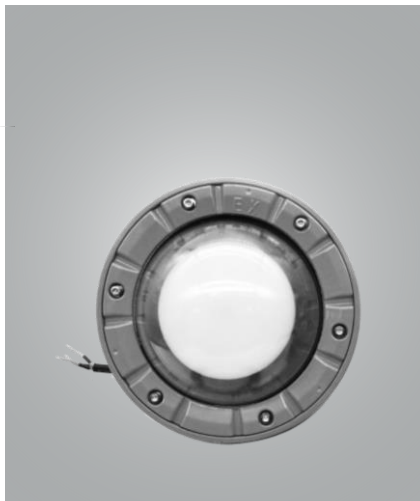
Aluminum alloy cable tray



Wire Mesh Cable Tray



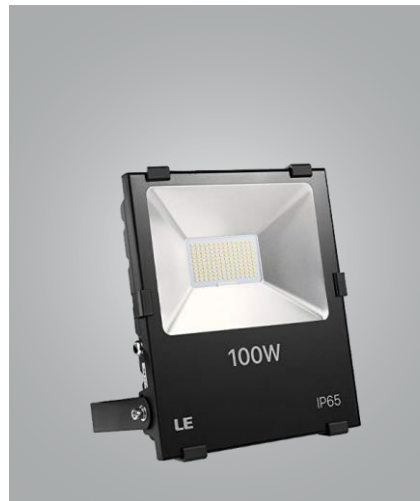
Low canopy light



Explosion-proof light



Sunflower flood light



Flood light



Single shot pile



Double gun pile



Integrated charging pile



Split charger



DC split type one machine double pile



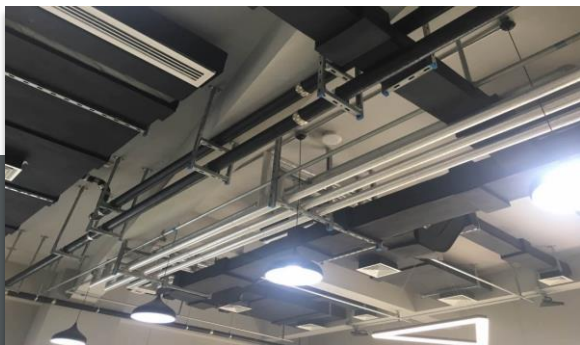
DC integrated double gun charging pile



DC split host

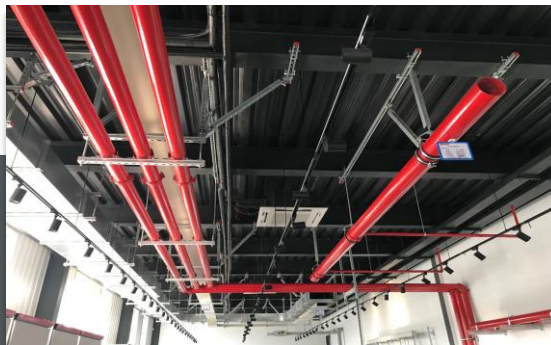
Finished hangers (bearing weight)

[Alternative to traditional support hangers welded by channel steel or screw and angle iron]



Anti-vibration Hangers

[Resistance to seismic forces in the horizontal direction]



Pipe hanger (arm arm + pre-buried channel)

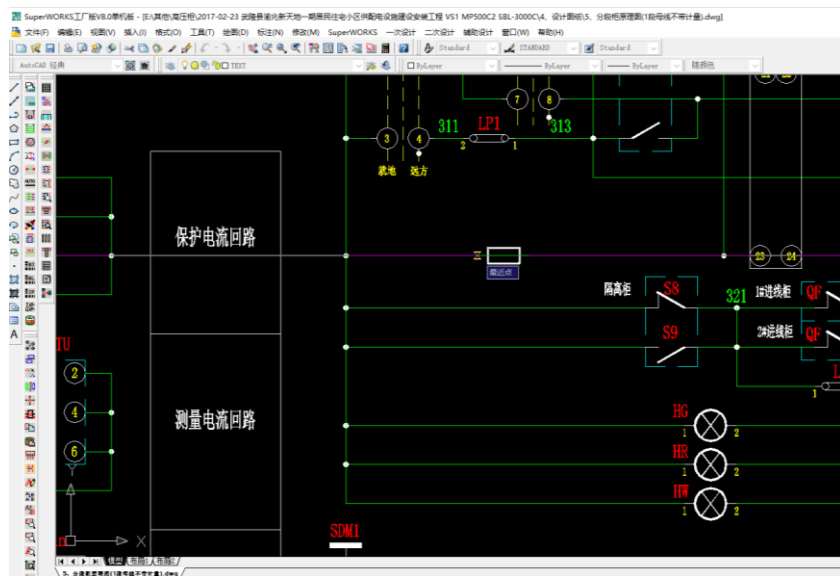
[Used to support power, communication, gas, heating, water supply and drainage pipelines]



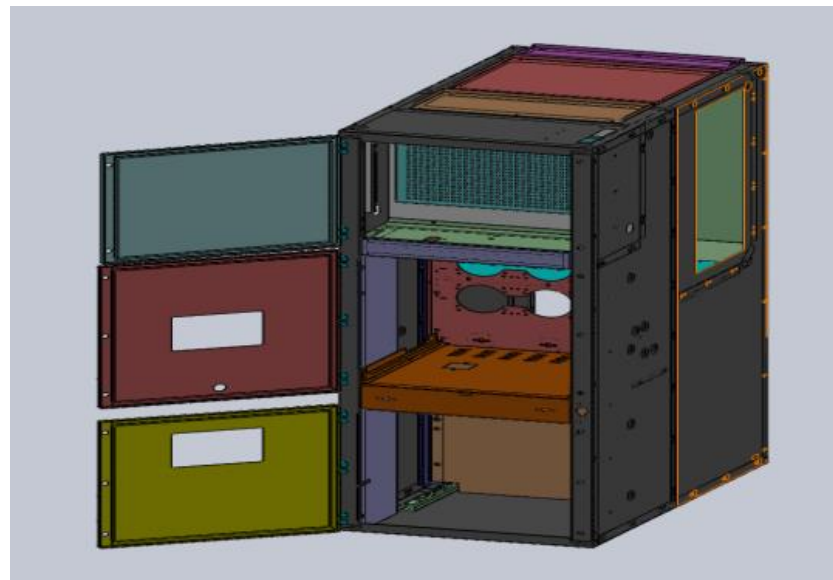
PART 04

R & D



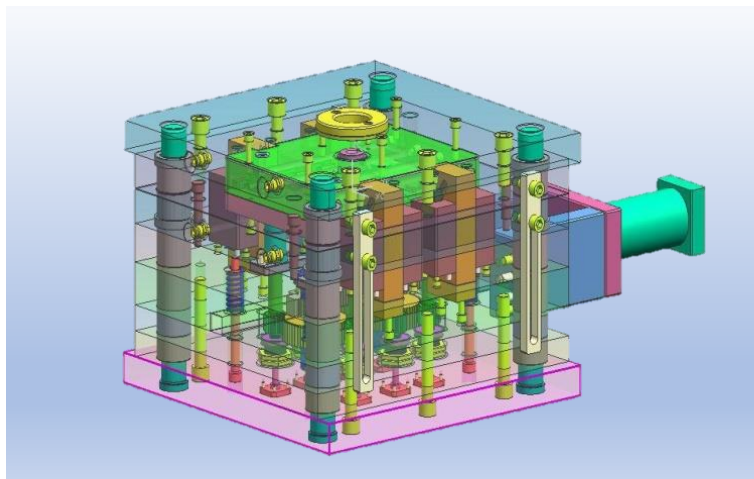


Production software (Electric) : Superworks

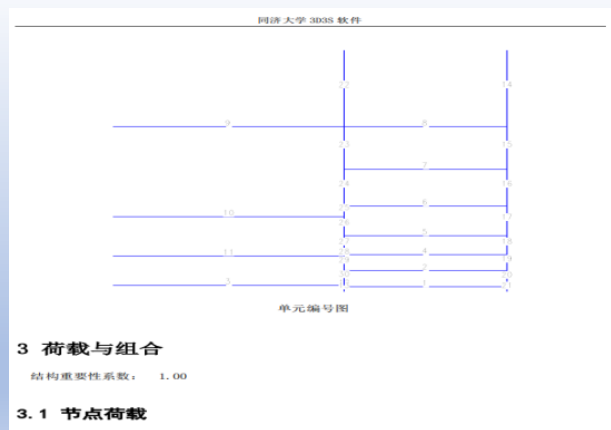


Production software (Mechanism) : Solidworks

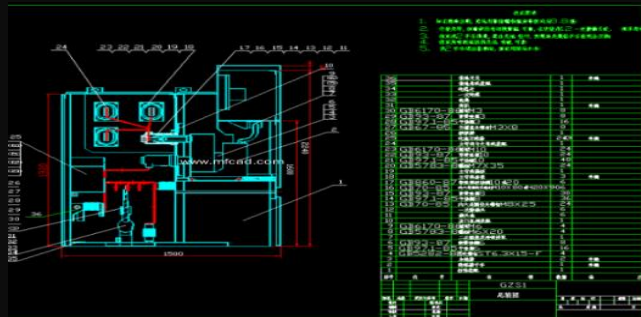
Manufacturing software: UG



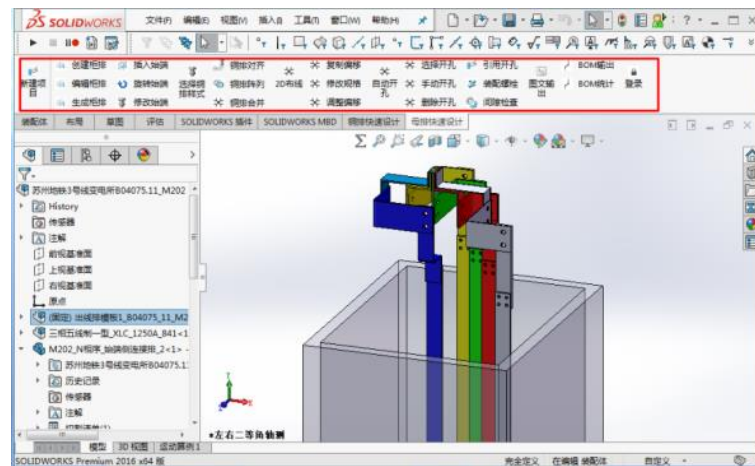
Structure analysis software: SolidWroks

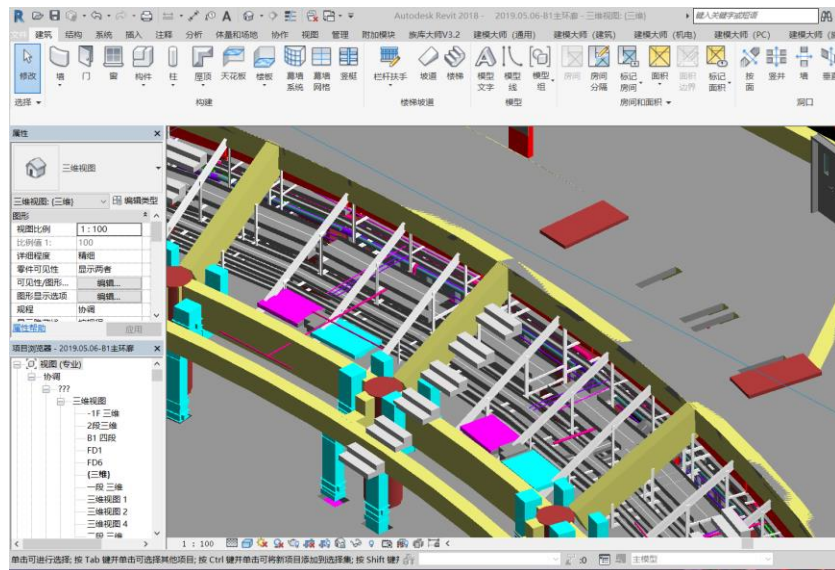


Design software: AUTOCAD

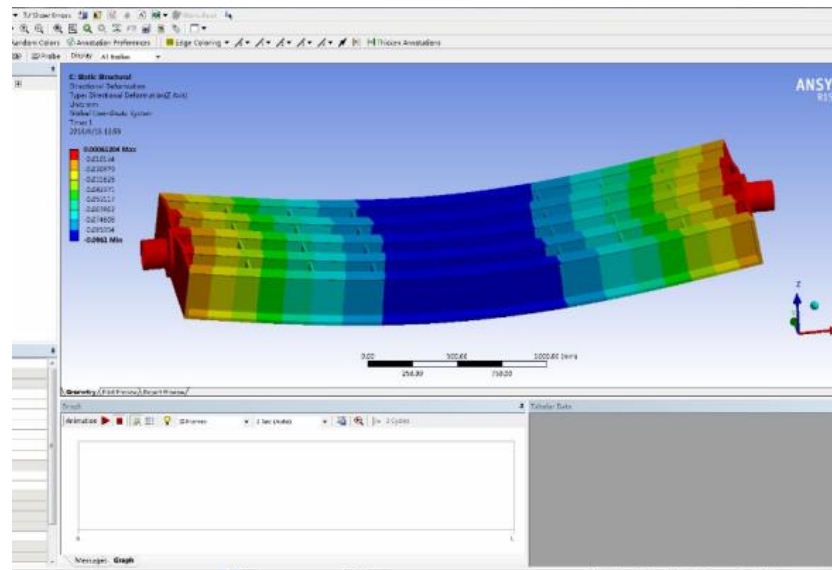


Site connection design software: busduct intelligent design



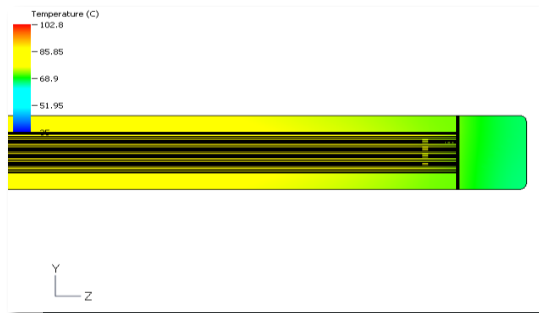
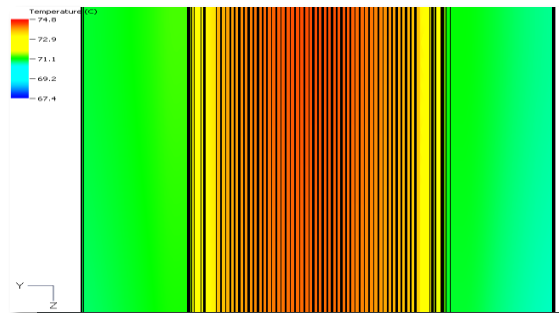
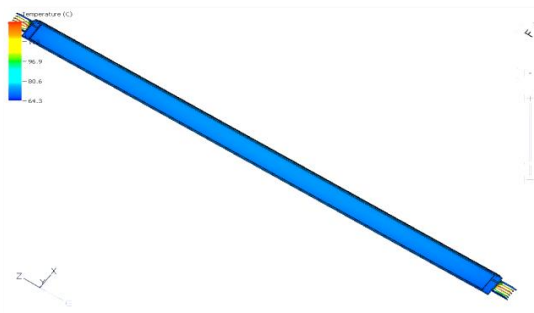
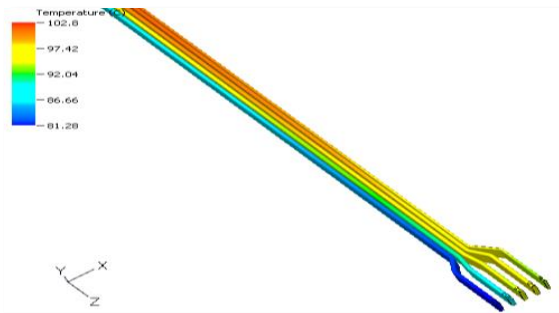


Mechanical & Electric installation & construction software



3D Analysis software: ANSYS

Enclosure Structure Design



Apply busway cooling simulation design software to successfully design the busway enclosure structure.



Thermal Conductivity Coefficient Tester



ROHS Inspection machine



Water-bathing Constant Temperature Vibrator



3D Printer



Full Automatic Push-Pull Tester



High Temperature Controller

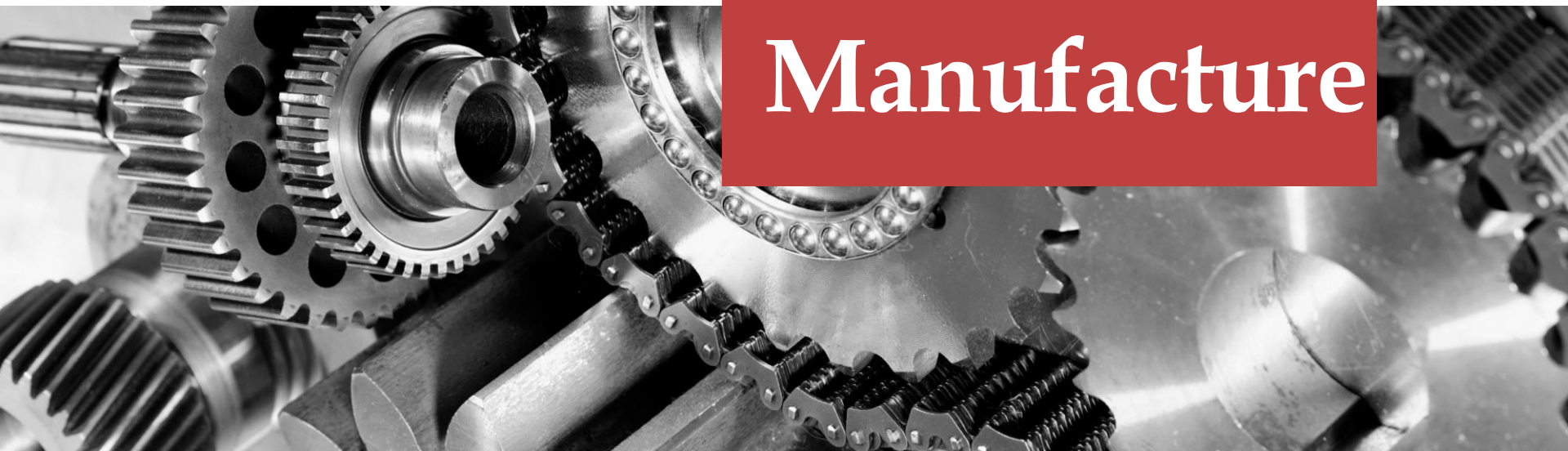


Numerical Temperature Controller



PART 05

Manufacture






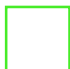
We have total 150 manufacturing equipments in the workshop.
To coordinate all these equipment to work with product manufacturing, we cooperates with Jiangsu University to implement the "Digital Manufacturing Execution System - MES, which is a fully traceability system for the busway product.

Production Center Data




 Busduct Manufacturing Area 27000 m²

 Main Material Storage 1600 m²

 Other Material Storage 1500 m²



 Max Storage Volume available for 54000 m busduct

 Annual Production Capacity 600000 m(TOU Exclusive)

 One-Time Delivery 99.5%

Sheet-Metal

- Sawing, Punching, Bending
- Welding

Finishing

- Plating
- Painting

Assembly

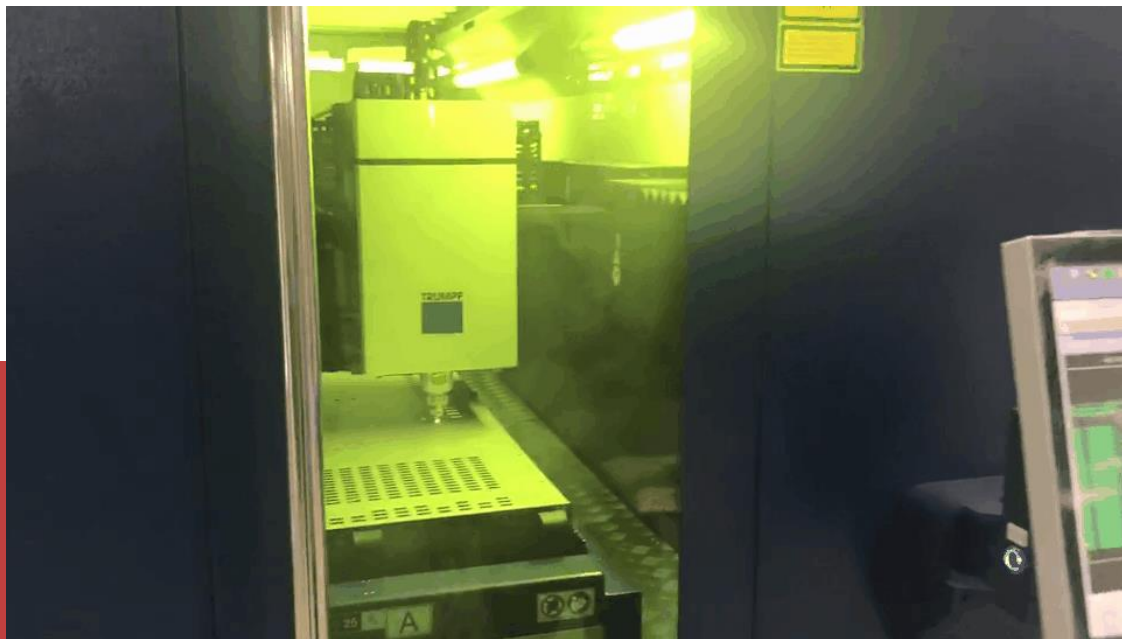
- Insulation
- Riveting

Production Center has 11 team:

Sawing Team
Punching Team
Bending team
Welding team
Finishing Team
Grinding Team
Insulation Team
Joint Assembly Team
TOU Assembly Team
Busduct Assembly Team
Delivery Term

Laser cutting

TRUMPF TruLaser 3030



AMS.HS-30510 CNC punching and shearing machine



PBH-220/3100-6C-FMC Robot automatic bending machine



MX-602K-6C CNC busbar punching and shearing machine



LJMA-160 CNC busbar punching and shearing machine



Trumpf TruBend 1100
CNC Bending Machine



Trumpf TruPunch 2000 CNC Punch



QJRH4-1A Robot Automatic Welding Machine



Germany BOLLHOLFF Bolhof automatic riveting line



Busduct intelligent
ex-factory inspection system



PART 06

Test





Testing area is located in No.1 workshop , including the area of : incoming inspection, temperaturing rising, VCB Characteristic , Partial discharge test , IP protection degree, Salt fog test, high & low temperature exchange humidity test.



Temperature
Rising Test
System
400-6300A

PD Test
Area





High and low temperature
alternating heat and humidity test



Dustproof Test Chamber



FISCHER SCOPE X-RAY XDL 210
X-ray fluorescence spectrometer



IK07-10 Pendulum impact test device





Tensile testing machine



Salt spray test machine



ULT620 Ultrasonic flaw detector



SIGMASCOPE® SMP350 Conductivity tester



Coating thickness gauge



Glow wire tester



Flame tester



IPX34 water spray



Rain simulation test



Waterproof test





Loop resistance tester



Lightning arrester tester



HV Test Transformer



DC power supply



PART 07

Busduct



CCX3 Compact Sandwich Busduct

Technique Parameter

- Current Level: 250A-6300A
- Rated Operating Voltage: 690V
- Rated Insulate Voltage: 1000V
- Insulation Level: B Level 130 degree
- Protection: Up to IP66
- Standard: GB7251, JB/T9662, IEC61439
- System: 3P3W, 3P4W, 3P5W, 100% N, 200% N
- Certification: CCC, DEKRA(KEMA), CE ,TUV

Characteristic

- Small size and light weight;
- Low impedance, low voltage drop and line loss;
- Conductor-intensive arrangement, low temperature rise, no "chimney effect";
- High short-circuit withstand capability, salt spray tolerance of more than 1200 hours



DCC Compact Sandwich Busduct

Technique Parameter

- Current Level: 100A-4000A
- Rated Operating Voltage: 1000V
- Rated Insulated Voltage: 1000V
- Protection: Up to IP66
- Standard: GB7251
- Certification: CCC

Characteristic

- Economical distribution bus products;
- Further improving the heat dissipation performance of the busbar;
- According to the skin effect of the current, the busbar width is increased, the busbar thickness is reduced, and the cost is reduced.



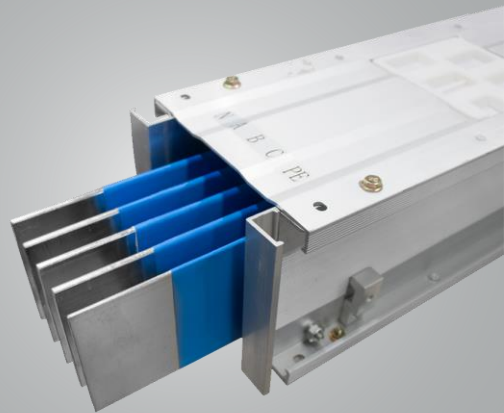
CFW Air Insulated Busduct

Technique Parameter

- Rated Current: 100 ~ 6300A
- Rated Voltage: 400V
- Protect Level: IP54
- Standard: GB7251
- Certification: CCC

Characteristic

- Beautiful appearance and high overall mechanical strength;
- The inner conductor of the outer casing is provided with a phase-separating block at intervals, to ensure absolute insulation between the phases and phases, which is safe and reliable;
- Applicable to a variety of factories, garment factories, office buildings and other places.



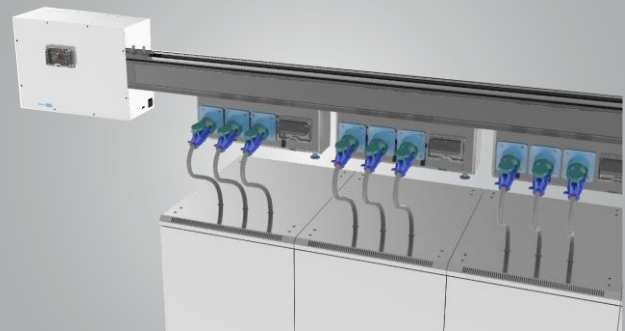
DCIB Data Center Intelligent Busduct

Technique Parameter

- Rated Operating Voltage: 400V(with tap unit)
1000V(without tap unit)
- Rated Insulated Voltage: 800V(with tap unit)
1000V(without tap unit)
- Rated Frequency: 50/60Hz
- Protect Level: IP54
- Insulation resistance: Phase(N)Insulation
resistance $\geq 500\text{M}\Omega$ phase(N) between enclosure
Insulation resistance $\geq 500\text{M}\Omega$
- Rated Current: 250A、400A、630A、800A
- Plug in box rated current: 32A、63A

Characteristic

- Fully control the power supply of the cabinet to achieve precise power distribution;
- The starting box (main road) and the plug box (branch) can monitor electrical parameters;
- a power collection device disposed on the start box and the plug box;
- With display record and over temperature alarm function;
- A centralized monitoring unit has been set up.
- Adopt RS485 or 10/100M network port and other intelligent interface communication methods and communication protocols;
- The structure design can realize the hot plugging function at any position of the plug-in box, which is convenient for adjusting the position of the cabinet in the random room;
- When the output is single-channel single-phase, the function of commutation can be realized to ensure the three-phase balance of the equipment room.



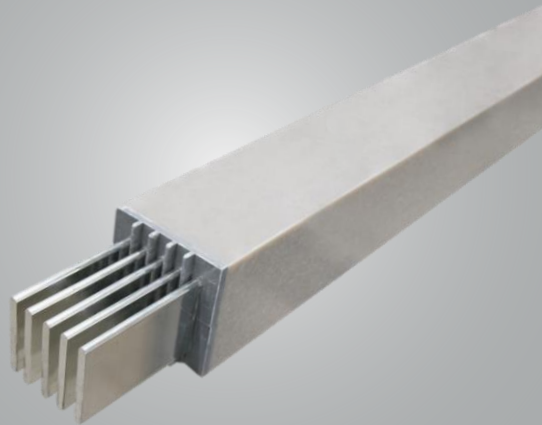
FSMC Cast Resin Busduct

Technique Parameter

- Rated Current: 250 ~ 6300A
- Rated Voltage: 690V
- Protect Level: IP68
- Mechanisim Strength: Can withstand 6 joules of mechanical shock to ensure safe use
- Standard: GB7251
- Certification: CCC

Characteristic

- It is made of high-performance insulating resin and has excellent air tightness and water tightness.
- The protection grade is IP68, it will not release harmful gases when it is high temperature; it is waterproof, anti-corrosion, explosion-proof and RoHS-compliant;
- Can be applied to all kinds of harsh and high clean environment, widely used in shipbuilding, paper making, power plants, substations, petrochemical, steel metallurgy, etc.



GFM NPB

GB/T 8349-2000

Technique Parameter

- Rated Current: 1000 ~ 6800A
- Rated Voltage: 6.3 ~ 35kv
- Protect Level: IP40, IP54
- Standard: IEC364-5、JB/T 9639、

GB/T 8349-2000

Characteristic

- It is used for the current transmission between the generator set plant circuit, the small hydropower unit outlet and the main transformer, and the main circuit and the substation transformer communication loop;
- The conductor can be rectangular, trough, tubular copper or aluminum;
- Aluminum (or weak magnetic steel) shell shield protection, small maintenance workload;
- Supporting cable heating device to ensure the internal insulation performance of the busbar is not affected by the external environment and improve stability;
- A portable or in-line monitoring system for conductor temperature can be added to improve the safety of the busbar system operation.



COOPER BUS BAR

Technique Parameter

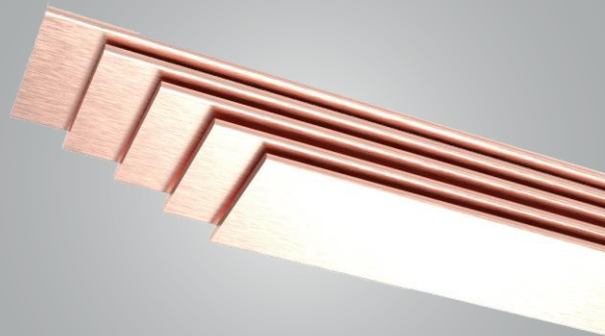
- Copper Content: 99.90%
- Total Impurity Content: 0.10%
- Tolerance: Thickness A: -0.04mm

Width B : -0.10mm

- Brinell hardness: HB 74 .0

Characteristic

- Tensile Strength : $\geq 259 \text{ N/mm}^2$
- 90° Bending : No crack
- Fillet radius: $R/r = 2.20 \text{ mm}$
- Resistivity P20 : $0.01730 \text{ } \Omega\text{mm}^2/\text{m}$
- Surface: Clean



PART 08

Key performance





Partner



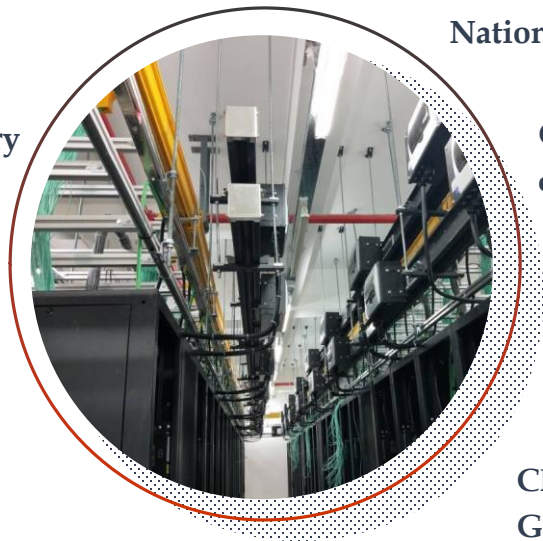
Beijing New Airport

State Grid Hubei Electric Power
Company new residential inventory
procurement project

China Mobile Jiangsu Co., Ltd. High
Voltage Switchgear Project

State Grid Jiangsu Power Co., Ltd.
sealed insulated busbar project

Fengman Hydropower Station



National Speed Skating Hall

China Telecom low-voltage sandwich
compact busway

Dashao Limu Maternity Hospital,
Nanlong Province, Angola

China Mobile Communications
Group compact sandwich Busway
Project

THANKS!



China Website: <http://www.dingshenggroup.net/>

Website: <https://www.dselectricalgroup.com/>